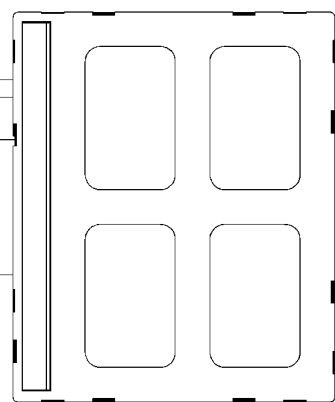
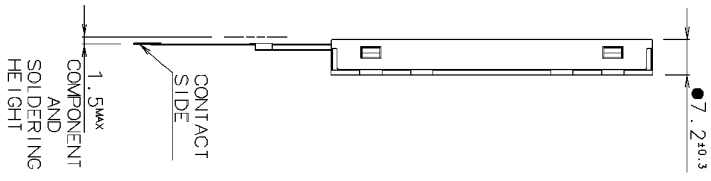
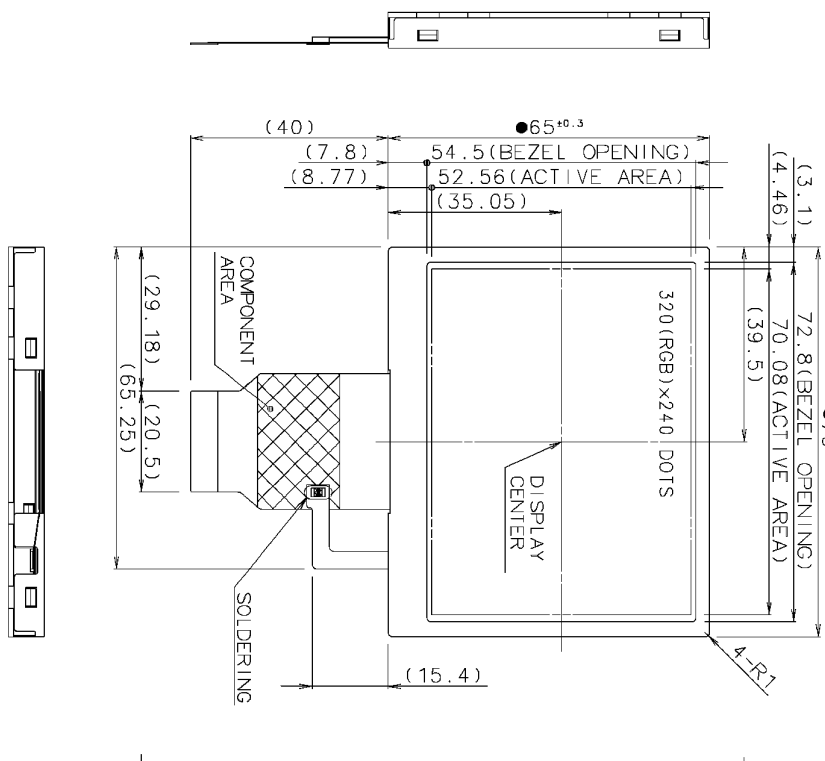




VIEWING DIRECTION
 ANGLE OF LEAST INVERSION



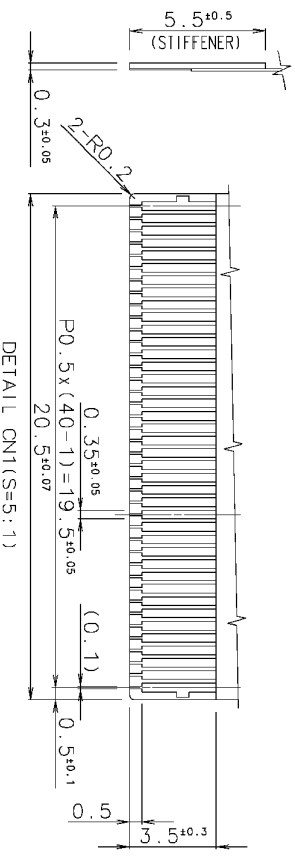
(KYOCERA ELCO: 6240 SHRIES)

CN1 PIN ASSIGNMENT

No.	SYMBOL	No.	SYMBOL
1	DOTCLK	21	DB8
2	VSYNC	22	GND
3	H SYNC	23	DB7
4	ENABLE	24	DB6
5	DB23	25	DB5
6	DB22	26	DB4
7	DB21	27	DB3
8	DB20	28	DB2
9	DB19	29	DB1
10	DB18	30	DB0
11	DB17	31	SD1
12	DB16	32	SCI
13	GND	33	CS
14	DB15	34	RESET
15	DB14	35	SD0
16	DB13	36	GND
17	DB12	37	IOVCC
18	DB11	38	VCC+YCI
19	DB10	39	LED-K
20	DB9	40	LED-A

TOLERANCE

MEASURE	A	B	C
L≤16	±0.1	±0.3	±1
16<L≤63	±0.2	±0.5	±1.5
63<L≤250	±0.3	±0.8	±2
250<L≤500	±0.5	±1.2	±3
500<L	±0.8	±2	±4
ANGLE	±1°	±5°	±10°



NOTE
 THE DIMENSIONS WITH THE MARK(●) ARE CONTROLLED
 AS A PARTICULAR CHARACTERISTIC.

MATERIAL: FINISH:

OPTREX CORPORATION

DATE: 2010/04/26
 APPROVED: Noboru Wada
 CHECKED: Yasuo Yamaguchi
 DRAWN: Satoshi Sarao

DATE	THIRD ANGLE PROJECTION	SCALE	UNIT	DATE	DRSCN	DWG NO.(CODE)	DWG SIZE
2010/04/26		1:1	MM	2010/04/26	S. Sano	T-55396A base	A3

ISSUE	REVISIONS	DRAWN	DATE